

URBAN ISSUES

Census Towns to ULBs -

not recogd as town/notified

CENSUS

TOWN:

governed by village panchayat

BUT

recogd by census as urban

urban character

3900

min^m popⁿ
5000

75% male working
in non agral.

popⁿ density $\geq 400/km^2$

STATUTORY ULB: with ULB

4000

NEED:

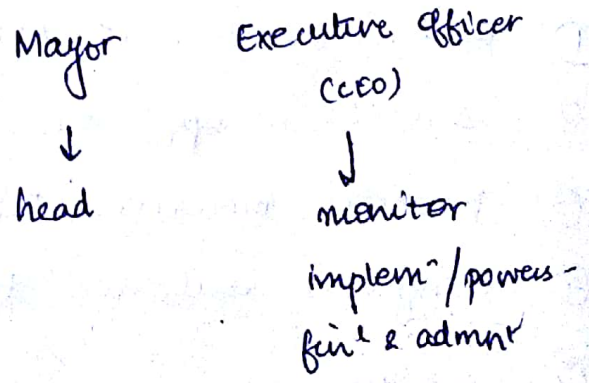
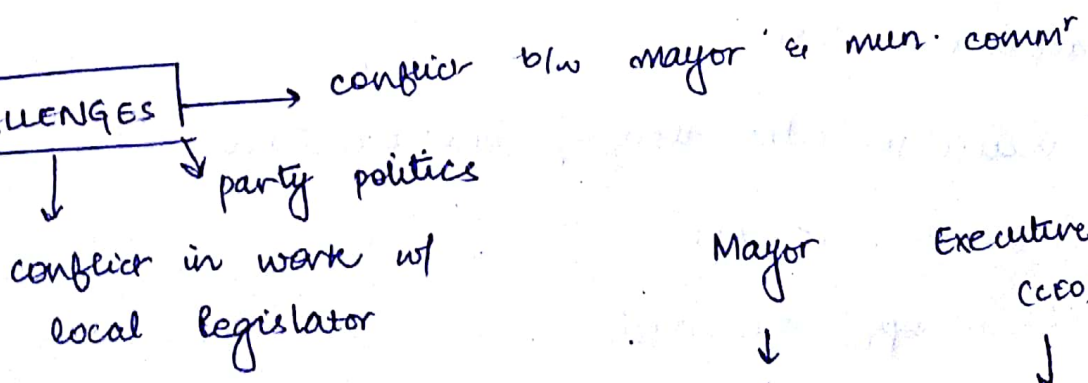
SGovt decision

- ① 26% of I is governed by ULBs but acc to census 31% I is urban
- ② to promote urban devt
- ③ enhanced over & up^r delivery of services
- ④ funds will be available to statutory towns for devt

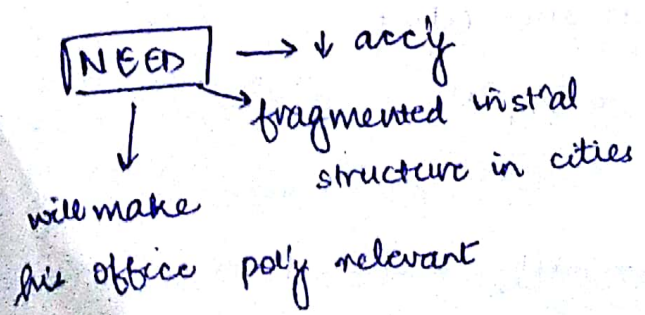
DIRECTLY ELECTED MAYOR pvt mem Bill

- multiple civic agencies → ∴ diff to hold them accountable for irregularities

CHALLENGES



NEED



RAPID Urbanization - peri urban areas - which NOT w/ ULR

60cr by 2031

- popⁿ ↑ will be concd in semiurban/rural areas r/lc core city

WB Report - [Urbanⁿ Beyond Municipal Boundaries]

urban sprawl.

add Geog issues

- NYU - making room approach - id'g areas that are projected to urbanize & procuring land before hand

Homeless Households
 ↓ed in rural
 ↑ed in Urban

(Census 2011?
 existing schemes punitive r/lc rehabilitative.

Persons in destitution (Protectⁿ, Care, Rehabⁿ) Bill 2016
 - decr. begging

NEW URBAN AGENDA - HABITAT III

1976 Vancouver

1986 Istanbul

2016 QUITO

175 commitments
 20 yrs.
 non binding
 built around SDG 11

global vision for cities alongw/ env^t protection

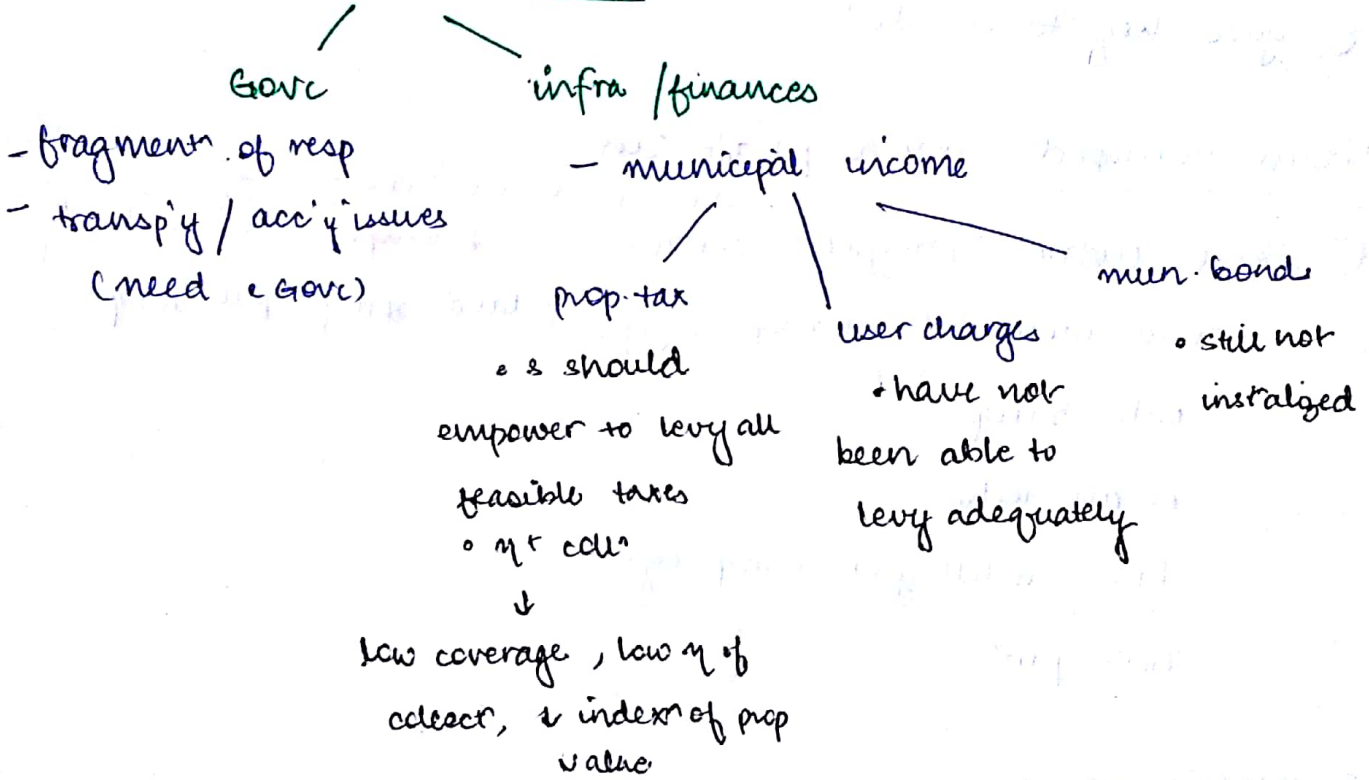
- ① Basic services TO ALL
- ② = access to opps no discⁿ
- ③ provide measures that support cleaner cities
- ④ strengthen resilience to ↓ risk & impact
- ⑤ ↓ GHG
- ⑥ respect r/r of refugees, migrants, internally displaced persons
 irrep of migⁿ statu

⑦ ↑ conn'y ; support green initiatives

⑧ Safe, accessible, green public spaces

ES reco

Challenges of ULBs



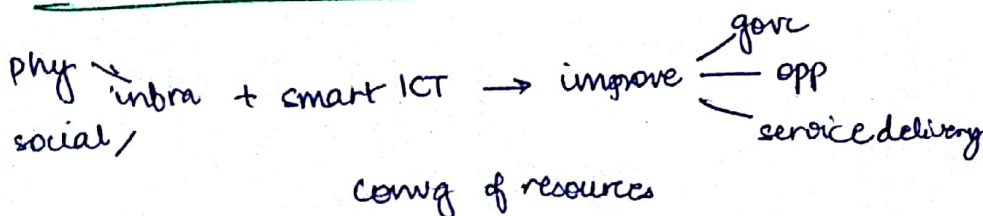
Private sector GURGAON & JAMSHEDPUR

- ① innovation
- ② compet'
- ③ role of cs.

WB coming out w/ "Ease of Living Index"

Tring urban

Smart Gram Initiative



Urban Plus Approach - N. Delhi Decn

(A.P. MC on Housing & Urban Devt. APMCHUD)

- ① planning for urban & adjoining rural = integrated
NOT separate
- ② promote New Urban Agenda
- ③ give key to cus devt

Urban Transport

move ppl r/o cars

- drawback in smart city

↓ emphasis on mobility

① Green Urban Transport scheme

- non motorised transp infra (land zoning, pub transp)
- pub. transp
- clean techs
- ITS - intelligent transp sys
- privt part

② METRO POLICY

- PPP
- delegation
- last mile conniy
- unified Metropol Transp Authy in state

Transit oriented devt

W/ NE Urban Transp Policy

- Proj's being taken up in

- Ahd
- Deldi
- Nagpur
- Raipur

Metro

MRT

(Mass Rapid Transit)

BRT
(Bus Rapid Transport)

① city densification along Mass transit corridors

(i) ↑ in FAR

(ii) non motorised transp

≠ integrate LUP w/ transport & infra devt

② seeks to enhance w/standing of S & UT.

③ funding: channelizing part of ↑ in prop'y values + betterment levies.

④ inclusive devt → mixed neighbourhood devt - affordable housing along/ housing

⑤ incorporate TOD in devt plans.